

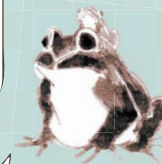
National Treasure  
**Sun, Moon,  
 & Four Seasons  
 Landscape  
 Folding Screen  
 'Restoration Project'**

I lived for about 500 years.

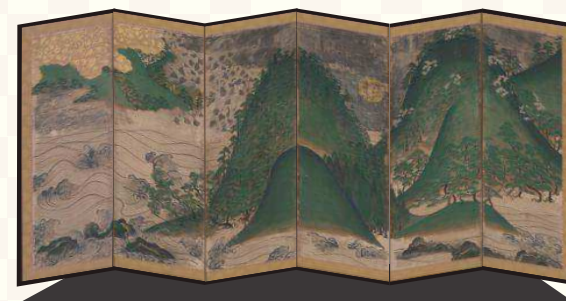
Survived the wars, met many people,  
 the times passed, and now is 2019.  
 You see my present figure.

A project to restore the  
 original form of my birth is  
 just started.

The experts say that it was  
 shining with gold and silver.  
 yes certainly it was.



Looking forward to see  
 the original form.



Amanosan  
 Kongoji Temple



Kongoji 3D Tour

2018年12月スタート 文化財多言語解説整備事業

事業者名

**AITReC**

一般社団法人  
 先端イメージング工学研究所

京都市左京区田中上大久保町 13-2-102  
 mail : office@aitrec.jp HP: https://aitrec.jp

**AITReC**



芸術のための科学技術  
 Science and Technology for Art



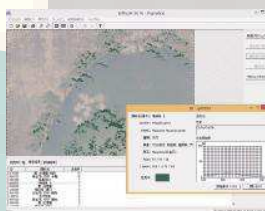
High color definition  
 and high resolution scanning

A non-contact devoted  
 scanner for cultural assets.  
 The surface information is  
 captured in microscopic level  
 and by using infrared sensors,  
 the subsurface information is  
 also revealed.



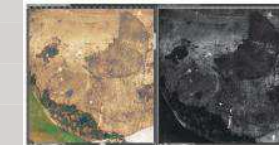
Analysis by skilled artisan

The period that the folding screen  
 was painted, its historical  
 background and origin is carefully  
 studied through investigation of it  
 composition, techniques, and the  
 material used. We brought the  
 expert of different fields  
 together, used their knowledge and  
 investigated when was it painted and  
 donated to the temple, its history,  
 art, people who made it and religion.



Analysis of material using  
 digital data.

The color is produced by  
 mixing and overlaying the  
 pigments and colorants.  
 Each material has its own  
 physical color spectra. Precise  
 recording of color and digital  
 scanning are strong tools for  
 analysing the material.



Replicating the original

The experts make the original  
 replica based on the  
 information of silver  
 oxidation, degradation of  
 color, pigment estimation,  
 local climate and weather,  
 conservation status and time  
 of production.

